

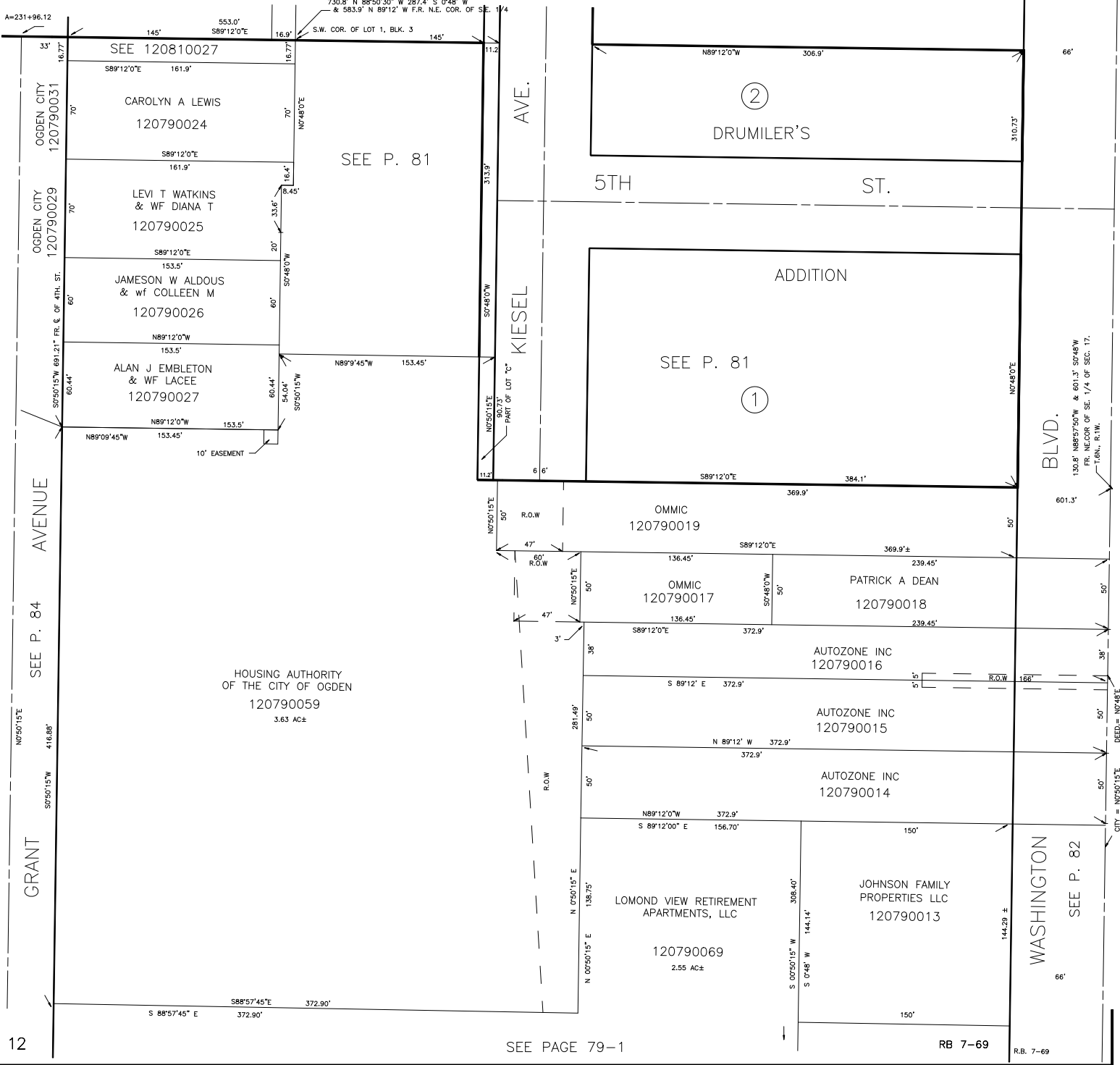
PART OF S.E. 1/4 OF
SECTION 17, T.6N.,R.1W., S.L.B.&M.

79-2

SCALE 1" = 50' IN OGDEN CITY

TAXING UNIT: 25

SEE PAGE 79



12

SEE PAGE 79-1

RB 7-69

R.B. 7-69

BLVD.
130.8' N89°57'50"W & 601.3' S0°48'W
FR. N.E. COR. OF SE. 1/4 OF SEC. 17,
T.6N., R.1W.

CITY = N0°50'15"E
DEED = N0°48'E